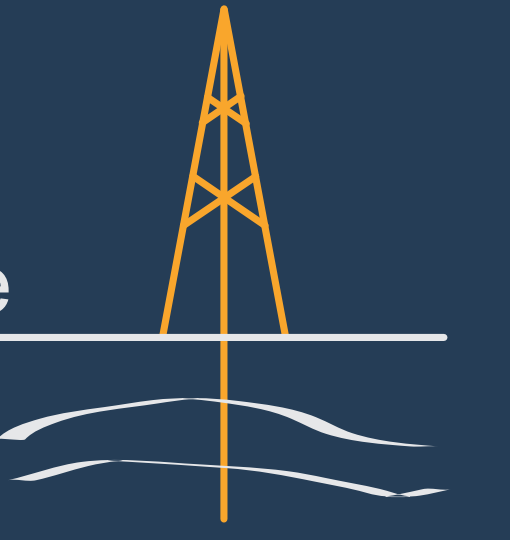


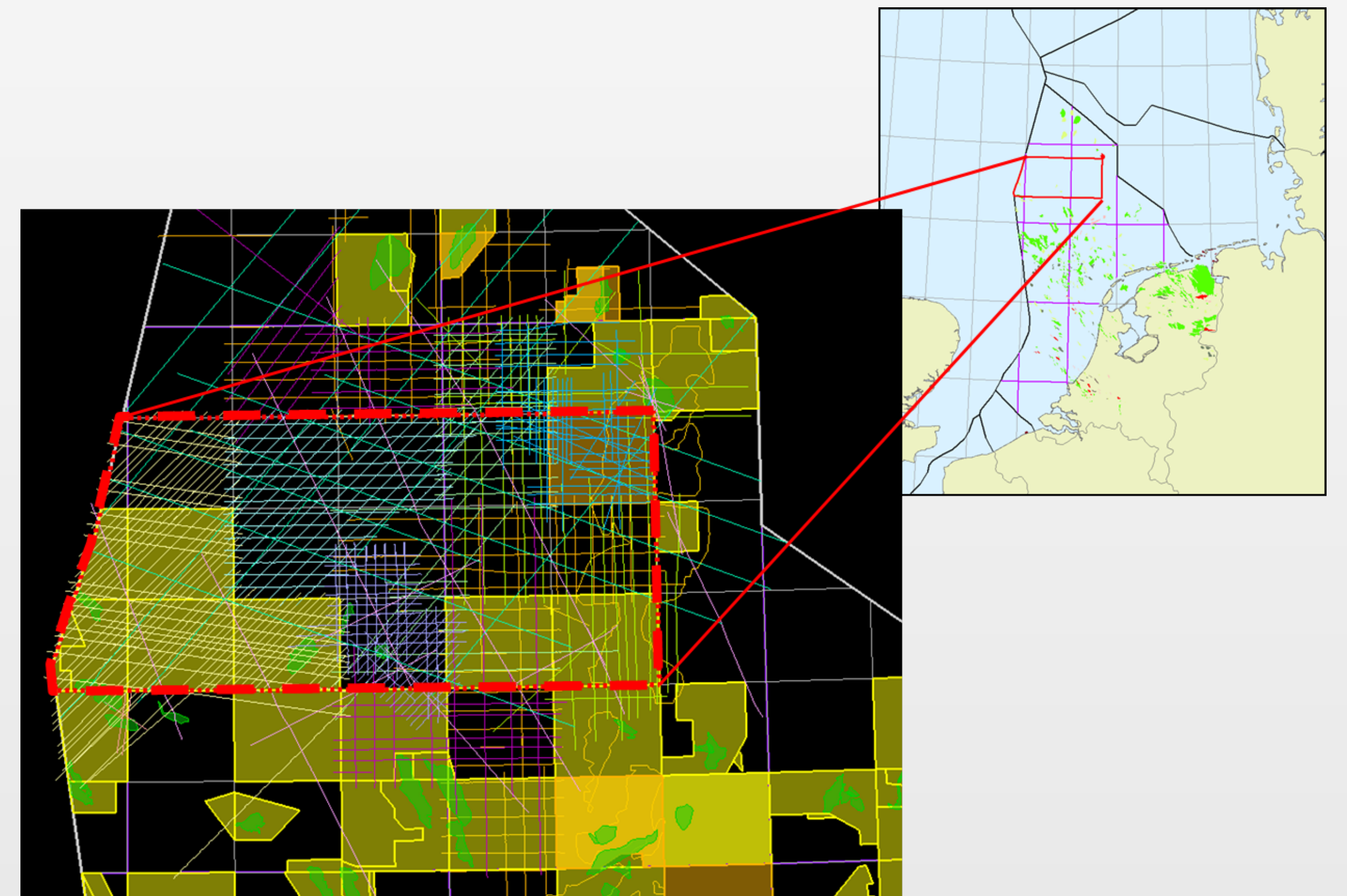
2D seismic analysis of Chalk Play potential in upper D, E and F-quadrants

Amsterdam
Petroleum
Geoscience



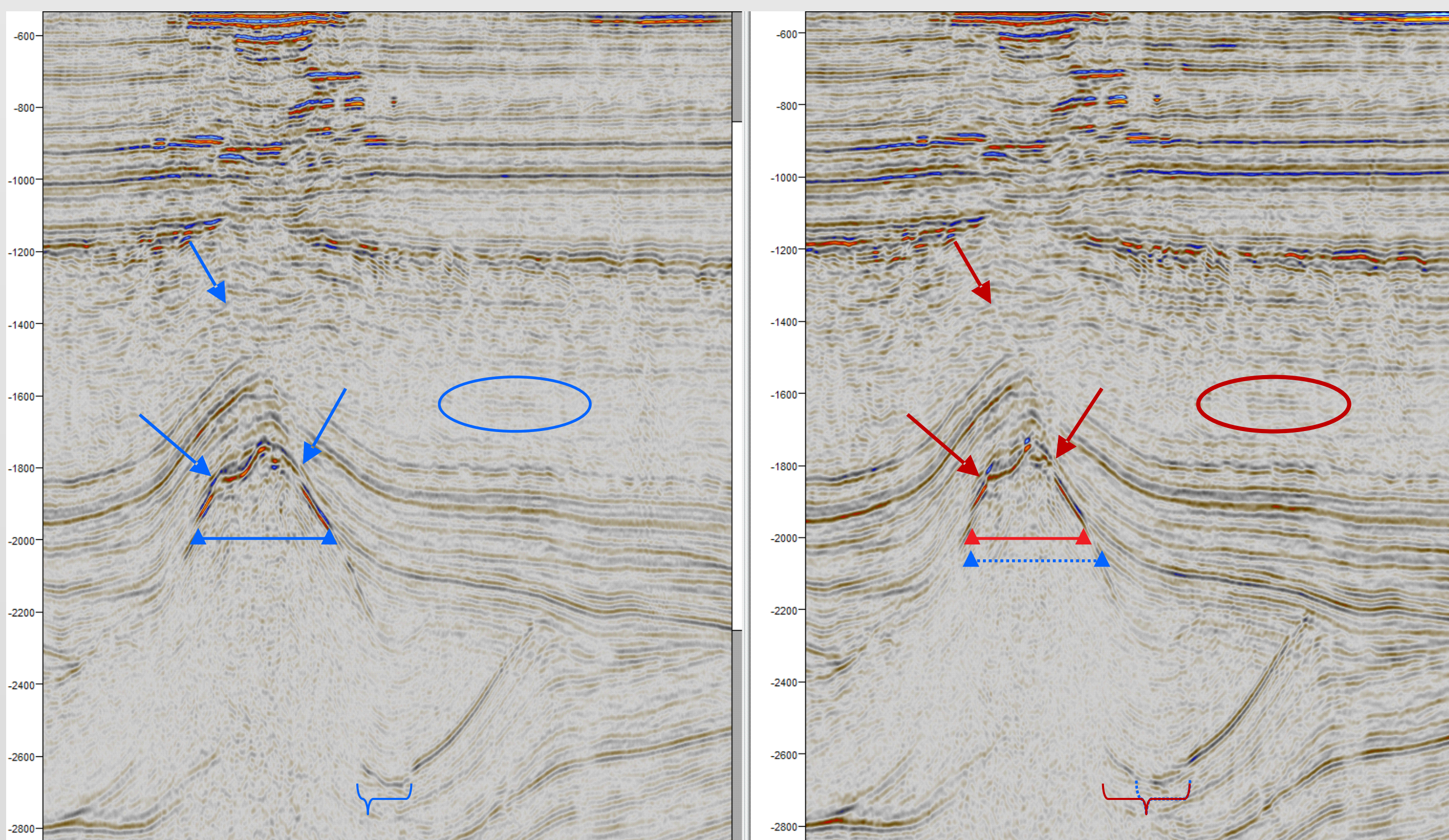
Overview

- Great interest in northern Dutch Offshore
- Focus on open acreage
- Regional 2D-seismic dataset covers study area:
 - ~350 reprocessed 2D-lines
 - 11 Surveys from 80's, 90's and 00's



Vintage

Reprocessed



Reprocessing improvement

Several processing steps applied to seismic data

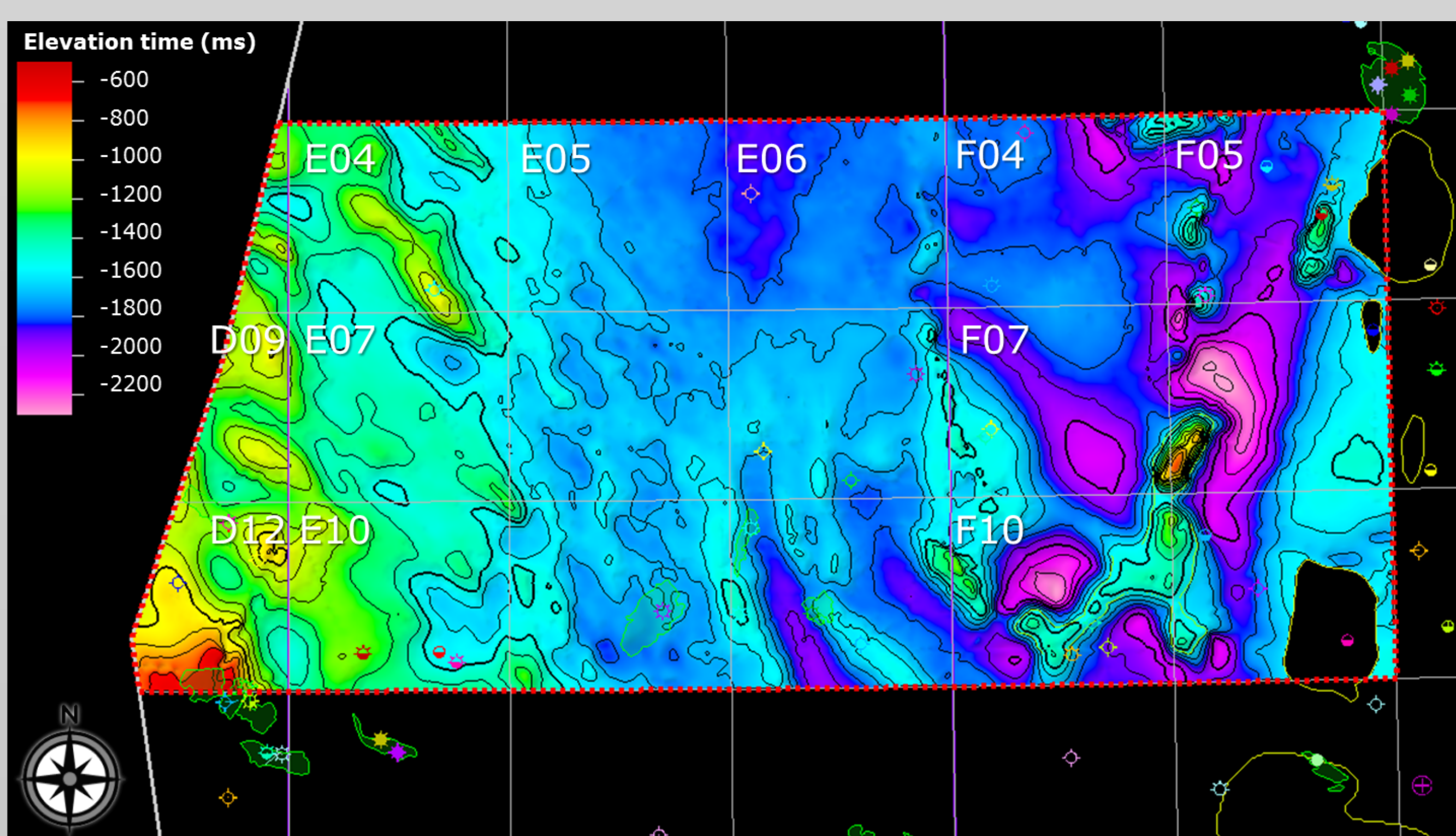
- Improve signal-to-noise ratio, Remigration Mute, Trace Balancing and Normalization

Seismic results:

- Narrower steep structures, wider rimsynclines
- More detailed faults, improved continuation

Untapped Potential

- Polygons of leads based on closing contours
- Leads classified in size, structure, column height, distance to wells, presence bright spots,
- 37 four-way-dip undrilled structures (!)
 - 28 structures $> 10 \text{ km}^2$
 - 9 structures $5\text{-}10 \text{ km}^2$



Deliverables

- Geological report
- Reprocessed 2D Seismic Dataset
- Petrel Project
 - Interpreted 2D-seismic dataset
 - All wells in the area, including LAS-files, synthetics and TD-tables
 - Re-interpreted well tops
 - Polygon set of identified Leads
 - Maps of reservoir and seal
 - Regional TNO-maps

Contact:
r.vaningen@amsterdampg.com